

Official fan guide

Ronde van Limburg

29.05.2023

HASSELT > TONGEREN



Dear cycling fan,

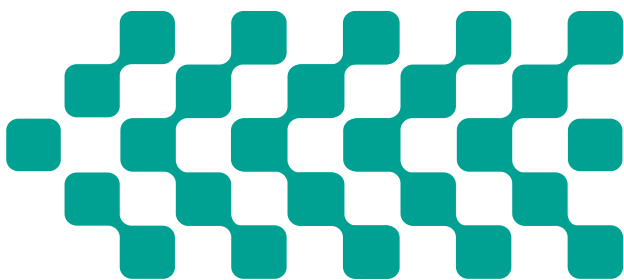
On Whit Monday, as is the tradition, the Ronde van Limburg is on the programme. On Monday 29 May, the peloton will be setting off from Hasselt on its journey through the fruit region of Haspengouw. In this fan guide, you can read all about the 75th edition of the Limburg classic. An anniversary that you don't want to miss!

The Ronde van Limburg gets an extra golden edge, because, in 2024, Limburg is organising the European Road Championships. Hasselt and Heusden-Zolder open their doors as host cities from 11 until 15 September 2024. It remains to be seen exactly what the courses will be, but the Ronde van Limburg is going to give us a sneak peek. So don't miss it!

Would you also like to explore the 75th Ronde van Limburg route yourself? Then come to Hasselt on Sunday 28 May. Bring your city, racing or e-bike with you, because Best of Limburg has planned a cool ride for every cyclist. Read more about this later in our fan guide.

Have fun!

Flanders Classics
#FLCS #RVL23



Ethias On Tour is er voor je.

Bij Ethias hebben we een absolute passie voor muziek, sport en cultuur, en zetten we ons graag in voor de maatschappij. Dat is Ethias on Tour. We zijn er voor mensen en initiatieven die het beste uit ons halen, die fun én verrijkend zijn voor jou als bezoeker of deelnemer.

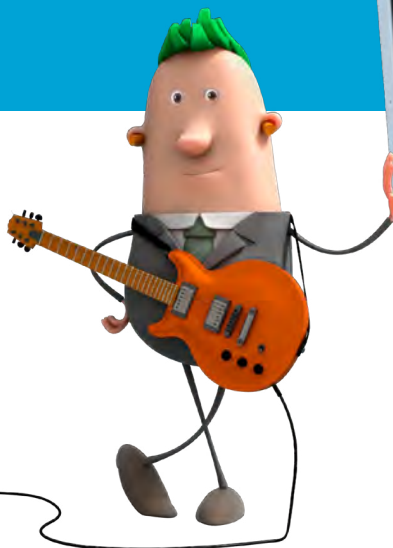
Ga met ons mee On Tour en maak kans op **een unieke beleving**, **win tickets voor festivals en sportwedstrijden**, **of neem een kijkje achter de schermen van topevents.**

Je ontdekt het allemaal op:

www.ethiasontour.be



Volg Ethias
On tour ook
op Instagram



Start Hasselt Programme

For the third year in a row, the Ronde van Limburg starts in Hasselt. This year, unlike in the past two editions, the peloton starts from the Kolonel Dusartplein.

WHAT'S ON THE PROGRAMME?

11:00 Team presentation on the podium on the Kolonel Dusartplein

12:15 Start of the race on the Kolonel Dusartplein



HOW TO GET THERE

On foot

Do you live in the vicinity of the city center? Then take a pleasant walk or bike ride to the start of the Ronde van Limburg. There you can immediately feel the sporting atmosphere that we are now all looking forward to.

By bike

Cyclists can leave their bikes in the appropriate area near the library on the Kolonel Dusartplein or in the underground car park Blauwe Boulevard in Quartier Bleu. Don't forget to bring your lock so that you can secure your bike and leave it behind safely.

By bus

Take the bus to the centre of Hasselt. You can find more information about the timetables on delijn.be.

Or you can leave your car on the outskirts of the city at the P+R carpool Hasselt-Zuid or park H (Trixxo Arena) and continue your journey by bus from there. You pay 1 euro for your ride into the city centre and the trip back to the car park is also 1 euro. Buy your tickets here: delijn.be/hasselparking.

By train

The railway station is also close by (1,3 km). Travel to Hasselt by train and walk to the start at the Kolonel Dusartplein. Check the train times on belgiantrain.be.

By car

Are you coming by car? Then paid parking is available in the Blauwe Boulevard underground car park (address: Slachthuiskaai) which is easily accessible and within walking distance of the start. Or you can park in one of the other car parks in the city. The underground car park at Kolonel Dusartplein itself is only accessible via the Koning Boudewijnlaan, but is not recommended because of the changed traffic situation in the vicinity of the start.

EXPLORE HASSELT!

You don't always have to look very far to get away from it all. Hasselt offers everything you could possibly want from an unforgettable city or day trip. And perhaps a little bit more. Because Hasselt is a real trendsetting and talked-about city. We invite you warmly to come and see for yourself. In your own way and at your own tempo. Hasselt is the ideal base from which to explore the rest of the province. On foot or by bike. Limburg begins here.

More about Hasselt? Go to www.visithasselt.be.





GARAGE

VOOR HET
TWEEDE JAAR
OP RIJ
JOUW PARTNER
TIJDENS
DE RONDE
VAN LIMBURG

**HET ONAFHANKELIJKE NETWERK
VAN MULTIMERK GARAGES VOOR
HET ONDERHOUD EN HERSTEL
VAN UW WAGEN!**



scan de QR-code
om de dichtstbijzijnde
garage te vinden

www.ad-belgium.be



Tongeren

Programme

The uphill finish in Tongeren has become a tradition in the meantime. Would you like to be in the front row for a group sprint finish or welcome a solo finisher with warm applause? Then come down to the Eeuwfeestwal in Tongeren on Monday 29 May and discover with us who eventually wins the 75th edition of the Ronde van Limburg.

WHAT'S ON THE PROGRAMME?

- 13:00 Start of the Nieuwsblad Cycling Series at the Eeuwfeestwal
- 14:24 Earliest anticipated first passage along the finish
- 15:17 Earliest anticipated second passage along the finish
- 16:09 Earliest anticipated third passage along the finish
- 17:00 Earliest anticipated finish

HOW TO GET THERE?

On foot / By bike

Do you live in the vicinity of Eeuwfeestwal or within cycling distance of the centre? Then take a pleasant walk or bike ride through the historical centre of Tongeren towards the finish of the Ronde van Limburg. There will be a bike parking near the finish area. Don't forget to bring your lock so that you can secure your bike and leave it behind safely.

By bus

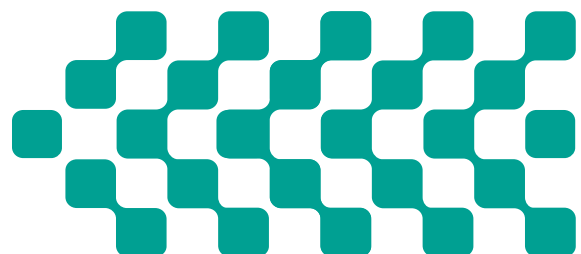
Do you live a bit too far away to cycle to Tongeren? Then choose public transport. Take the bus to the centre of the first city of Belgium. You can find more information about the timetables on delijn.be.

By train

The railway station is also close by. Travel by train to Tongeren and then walk to the finish on Eeuwfeestwal (just over 1 km – about a 14 minute walk). Check the train times on belgiantrain.be.

By car

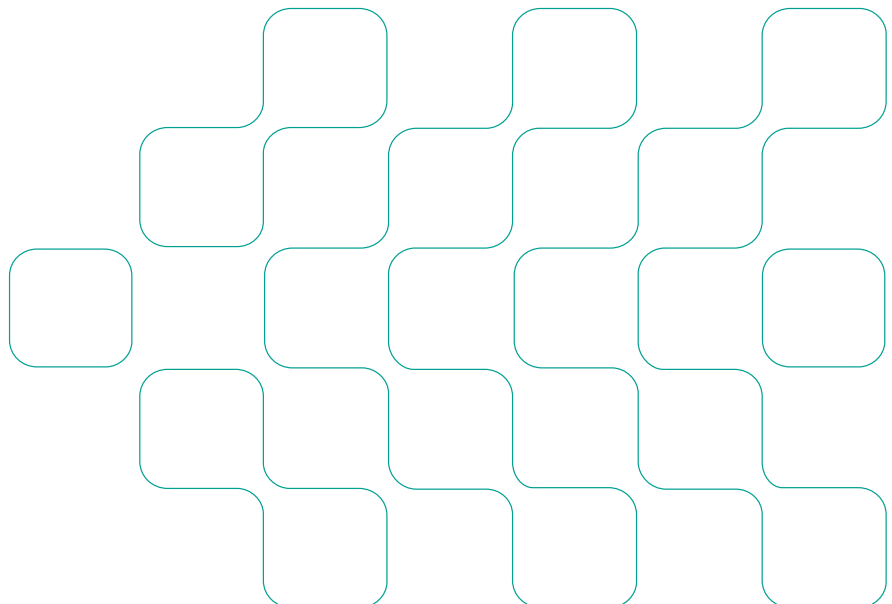
Are you coming by car? Then (paid) parking is available at one of the carparks in the city or on the outskirts. [More info](#).



EXPLORE TONGEREN!

Tongeren is so much more than just a gateway to the beautiful Haspengouw. Whether you like to delve into the past, enjoy culture, go shopping or savour gastronomic delights... The first city of the country has it all. Exploring the region by bike? Tongeren is your ideal base!

More about Tongeren? Go to visittongeren.be.





Kick-off on Monday 29/05 at the Ronde van Limburg!

What? Race for Special Olympics athletes

Where? Eeuwfeestwal Tongeren

When? 13:00

Followed by finish of the
Ronde van Limburg

See you there!



Lotto, trotse gangmaker van de koers



Omdat het kan **Lotto**



Edition 2022

Ronde van Limburg

Belgian thoroughbred talent Arnaud De Lie surfaced in 2022 with the title of top favourite. The then 20-year-old Belgian sprinted fastest on the Eeuwfeestwal in Tongeren, recording a fine series of three consecutive victories. On the ascending finish in Tongeren, De Lie had to deal with Sam Bennett, out of whose wheel he initiated his sprint. He made it to the finish line ahead of Italian Consonni and Dutchman Van Poppel. Relive the 74th edition of the Ronde van Limburg below.

RELIVE IT HERE

Results 2022

1	Arnaud De Lie	BEL	6	Quinten Hermans	BEL
2	Simone Consonni	ITA	7	Piet Allegaert	BEL
3	Danny van Poppel	NED	8	Stanislaw Aniolkowski	POL
4	Milan Menten	BEL	9	Giacomo Nizzolo	ITA
5	Sam Bennett	IRE	10	Tim Merlier	BEL

KWAREMONT

6,6%

WIJ ZIJN HIER NIET ALLEEN VOOR DE KOERS ...



... DUWEN VOOR KOPMANNEN

KWAREMONT

PITTIG BLOND

6,6%



... ook voor de verfrissende Kwaremont.

Bier met liefde gebrouwen, drink je met verstand

Race information

This year, the route of the Ronde van Limburg is a little different. Due to roadworks, the cobblestone stretches of Manshoven and Op de Kriezel could not be included in last year's race, but, this year, these major South Limburg obstacles are once again part of the deal.

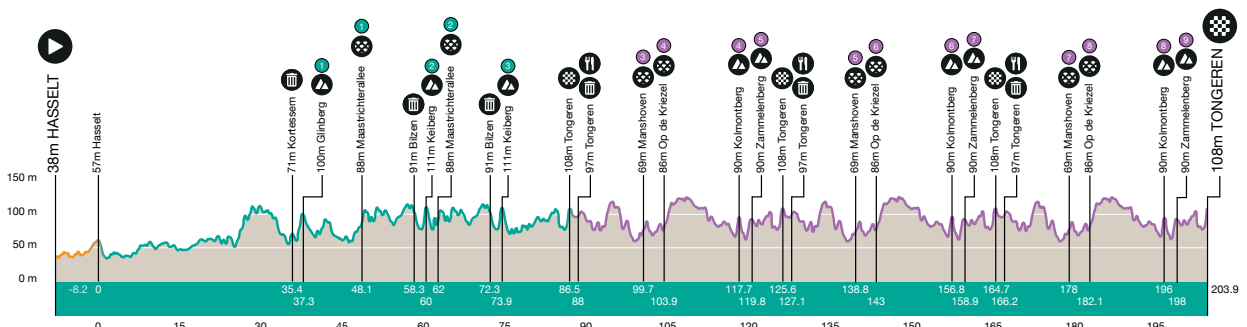
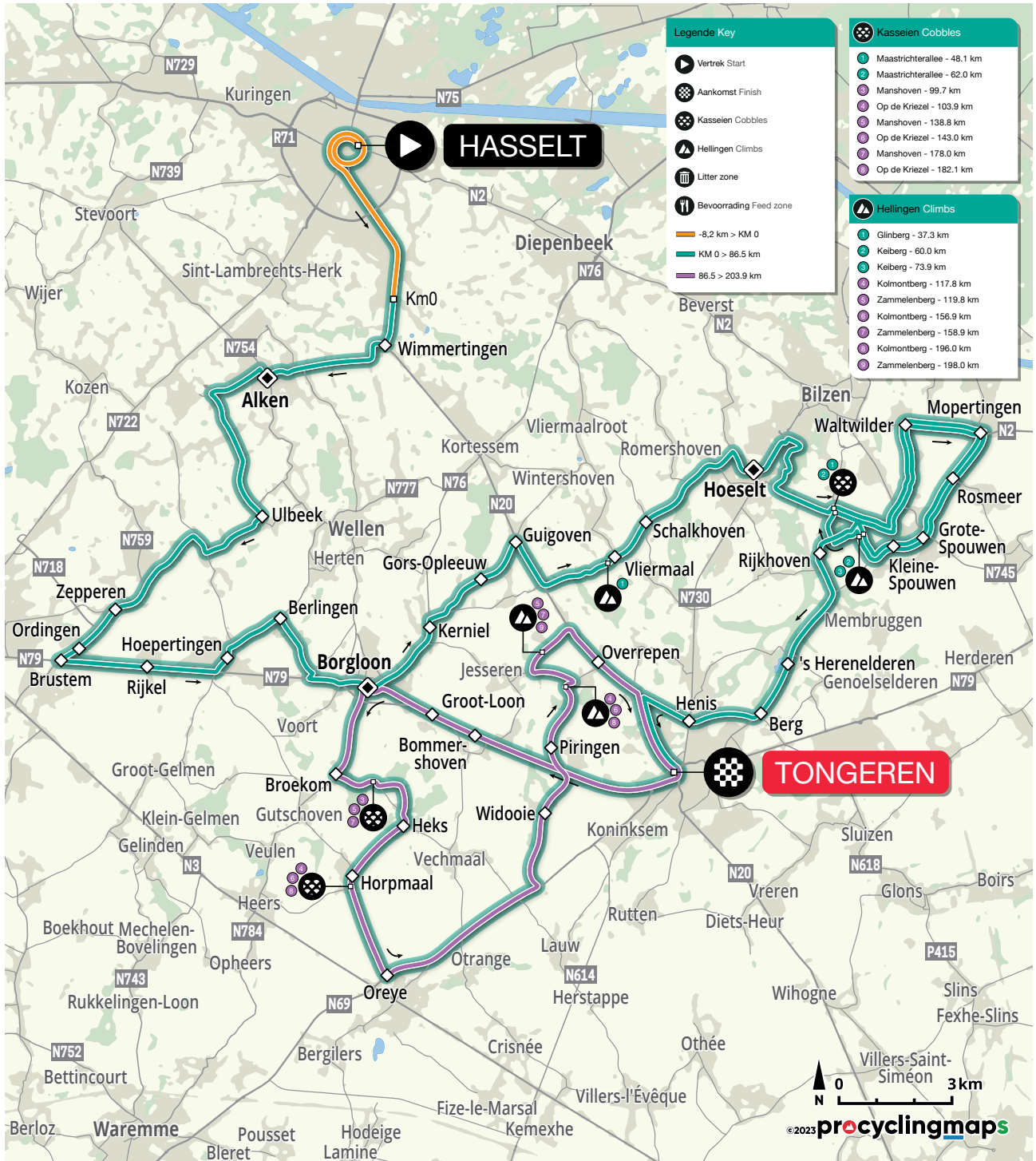
Just as in the past two years, the race starts in the centre of Hasselt. From Kolonel Dusartplein, the peloton begins a journey of almost 204 km. Via Sint-Truiden it heads towards Kortesseem where, after 37 km, the Glinberg is the first climb of the day. The peloton then sets course for the land commandery Alden Biesen, a double passage over the cobblestones of the Maastrichterallee awaits and the Keiberg will also be climbed twice.

The race then winds its way towards Tongeren where, after a first passage along the finish, there are three local laps each of 39 km. On this local loop, the riders are first served up with the cobblestones of Manshoven and Op de Kriezel. On the way to the finish there are still the Kolmontberg and, at 6 km from the finish line, the Zammelenberg.

We will find out who Arnaud De Lie's successor is at around quarter past five. More information about the passages on the climbs and cobblestone stretches and a click-through to the start list can be found later in this guide.

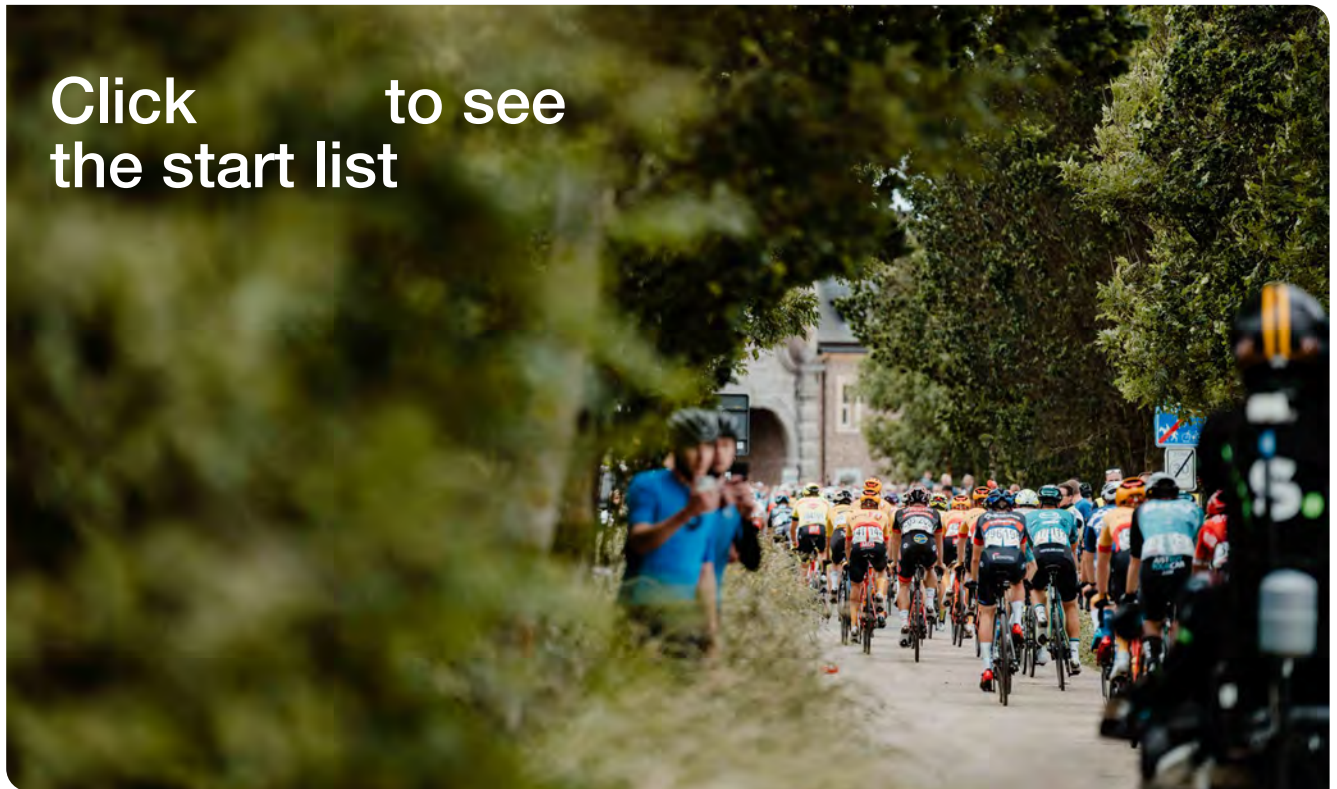


This is what the course looks like



Who will be starting?

Will it again be a group sprint on the Eeuwfeestwal in Tongeren? Who will be your favourite in such a scenario? You can decide based on the start list. The list below will be updated in the run-up to the race if the riders' schedules change. On 28/05, the finalised start list can be viewed using the button below.



Click [here](#) to see the start list

The course at street level

Do you live next to the course and want to know exactly when the riders will be passing by in your street? Then our roadmap below will undoubtedly have the answer to your question. Do you have a question about the traffic measures in your municipality? If so, it is best to contact the local authority for more information.



Where can I cheer on my favourite?

	km +	km -	41 km/h	43 km/h	45 km/h		km +	km -	41 km/h	43 km/h	45 km/h
Limburg											
Hasselt											
	Officieuze Start	-8.2	12:15	12:15	12:15						
	Officiële Start	0.0	203.9	12:29	12:29	12:29					
	Wimmertingen	1.1	202.8	12:31	12:31	12:31					
	Alken	1.6	202.3	12:31	12:31	12:31					
Wellen											
	Ulbeek	8.7	195.2	12:42	12:41	12:41					
Sint-Truiden											
	Zepperen	18.4	185.5	12:56	12:55	12:54					
	Ordingen	16.2	187.7	12:53	12:52	12:51					
	Brustem	17.6	186.3	12:55	12:54	12:53					
	Ordingen	18.0	185.9	12:55	12:54	12:53					
	Brustem	18.7	185.2	12:56	12:55	12:54					
Borgloon											
	Rijkel	19.6	184.3	12:58	12:56	12:55					
	Hoepertingen	20.8	183.1	12:59	12:58	12:57					
Wellen											
	Berlingen	23.5	180.4	13:03	13:02	13:00					
Borgloon											
	Borgloon	24.6	179.3	13:05	13:03	13:02					
	Kerniel	29.5	174.4	13:12	13:10	13:08					
	Gors-Opleeuw	31.2	172.7	13:15	13:13	13:11					
Kortesseem											
	Guigoven	33.5	170.4	13:18	13:16	13:14					
	Viermaal	34.8	169.1	13:20	13:18	13:15					
	Litter Zone	35.4	168.5	13:21	13:19	13:16					
	Hill 1: Glinberg	37.3	166.6	13:24	13:21	13:19					
Hoeselt											
	Schalkhoven	37.8	166.1	13:24	13:22	13:19					
	Hoeselt	39.7	164.2	13:27	13:24	13:22					
	Bilzen	43.8	160.1	13:33	13:30	13:27					
	Hoeselt	45.5	158.4	13:36	13:33	13:30					
	Bilzen										
	Rijkhoven	48.1	155.8	13:39	13:36	13:33					
	Maastrichterallee	48.1	155.8	13:39	13:36	13:33					
	Kleine-Spouwen	48.7	155.2	13:40	13:37	13:34					
	Walwilder	51.3	152.6	13:44	13:41	13:37					
	Hoelbeek	53.1	150.8	13:47	13:43	13:40					
	Walwilder	53.5	150.4	13:47	13:44	13:40					
	Mopertingen	54.0	149.9	13:48	13:44	13:41					
	Rosmeer	55.0	148.9	13:50	13:46	13:42					
	Grote-Spouwen	56.6	147.3	13:52	13:48	13:45					
	Kleine-Spouwen	57.2	146.7	13:53	13:49	13:45					
	Litter Zone	58.3	145.6	13:54	13:50	13:47					
	Hill 2: Keiberg	60.0	143.9	13:57	13:53	13:49					
	Rijkhoven	60.3	143.6	13:57	13:53	13:49					
	Maastrichterallee	62.0	141.9	14:00	13:56	13:52					
	Kleine-Spouwen	62.7	141.2	14:01	13:57	13:53					
	Walwilder	65.2	138.7	14:04	14:00	13:56					
	Hoelbeek	67.0	136.9	14:07	14:03	13:58					
	Walwilder	67.4	136.5	14:08	14:03	13:59					
	Mopertingen	67.9	136.0	14:09	14:04	14:00					
	Rosmeer	68.9	135.0	14:10	14:05	14:01					
	Grote-Spouwen	70.6	133.3	14:12	14:08	14:03					
	Kleine-Spouwen	71.2	132.7	14:13	14:08	14:04					
	Litter Zone	72.3	131.6	14:15	14:10	14:05					
	Hill 3: Keiberg	73.9	130.0	14:17	14:12	14:08					
	Rijkhoven	74.2	129.7	14:18	14:13	14:08					
Riemst											
	Membruggen	77.0	126.9	14:22	14:17	14:12					
Tongeren											
	's-Herenelderen	77.5	126.4	14:23	14:17	14:12					
	Berg	80.3	123.6	14:27	14:21	14:16					
	Henis	81.1	122.8	14:28	14:22	14:17					
	Tongeren	82.3	121.6	14:30	14:24	14:19					
	Eerste Passage Aankomst	86.5	117.4	14:36	14:30	14:24					
	Litter Zone										
	Bevoorrading - Ravitaillement	88.0	115.9	14:38	14:32	14:26					
	Litter Zone										
	Piringen	88.7	115.2	14:39	14:33	14:27					
Borgloon											
	Haren	90.8	113.1	14:42	14:36	14:30					
	Bommershoven	91.8	112.1	14:43	14:37	14:31					
	Groot-Loon	92.9	111.0	14:45	14:39	14:33					
	Borgloon	93.8	110.1	14:46	14:40	14:34					
	Broekom	97.2	106.7	14:51	14:45	14:39					
	Manshoven	99.7	104.2	14:55	14:48	14:42					
Heers											
	Heks	99.7	104.2	14:55	14:48	14:42					
Borgloon											
	Heks	99.8	104.1	14:55	14:48	14:42					
Heers											
	Heks	100.3	103.6	14:56	14:49	14:43					
	Horpmaal	102.4	101.5	14:59	14:52	14:46					
	Op de Kriemel	103.9	100.0	15:01	14:54	14:48					
Liège - Luik											
	Oreye	105.4	98.5	15:03	14:56	14:50					
Limburg											
Heers											
	Vechmaal	108.6	95.3	15:08	15:01	14:54					
Tongeren											
	Lauw	109.7	94.2	15:10	15:02	14:55					
	Widoioie	111.2	92.7	15:12	15:04	14:57					
	Piringen	114.3	89.6	15:16	15:09	15:01					
	Overrepen	116.8	87.1	15:20	15:12	15:05					
	Hill 4: Kolmontberg	117.7	86.2	15:21	15:13	15:06					
Kortesseem											
	Viermaal	119.2	84.7	15:23	15:15	15:08					
	Hill 5: Zammelenberg	119.8	84.1	15:24	15:16	15:09					
Tongeren											
	Tongeren	122.2	81.7	15:28	15:20	15:12					
	Tweede Passage Aankomst	125.6	78.3	15:33	15:24	15:17					
	Litter Zone										
	Bevoorrading - Ravitaillement	127.1	76.8	15:35	15:26	15:19					
	Litter Zone										
	Piringen	127.8	76.1	15:36	15:27	15:20					
Borgloon											
	Haren	129.9	74.0	15:39	15:30	15:22					
	Bommershoven	130.9	73.0	15:41	15:32	15:24					
	Groot-Loon	132.0	71.9	15:42	15:33	15:25					
	Borgloon	132.9	71.0	15:44	15:35	15:26					
	Broekom	136.3	67.6	15:49	15:39	15:31					
	Manshoven	138.8	65.1	15:52	15:43	15:34					
Heers											
	Heks	138.8	65.1	15:52	15:43	15:34					
Borgloon											
	Heks	138.9	65.0	15:52	15:43	15:34					
Heers											
	Heks	139.4	64.5	15:53	15:44	15:35					
Horpmaal											
	Op de Kriemel	141.5	62.4	15:56	15:47	15:38					
	Op de Kriemel	143.0	60.9	15:58	15:49	15:40					
Liège - Luik											
	Oreye	144.5	59.4	16:01	15:51	15:42					
Limburg											
Heers											
	Vechmaal	147.7	56.2	16:05	15:55	15:46					
Tongeren											
	Lauw	148.8	55.1	16:07	15:57	15:48					
	Widoioie	150.4	53.5	16:09	15:59	15:50					
	Piringen	153.4	50.5	16:14	16:03	15:54					
	Overrepen	155.9	48.0	16:17	16:07	15:57					
	Hill 6: Kolmontberg	156.8	47.1	16:19	16:08	15:58					
Kortesseem											
	Viermaal	158.3	45.6	16:21	16:10	16:00					
	Hill 7: Zammelenberg	158.9	45.0	16:22	16:11	16:01					
Tongeren											
	Tongeren	161.3	42.6	16:25	16:14	16:04					
	Derde Passage Aankomst	164.7	39.2	16:30	16:19	16:09					
	Litter Zone										
	Bevoorrading - Ravitaillement	166.2	37.7	16:32	16:21	16:11					
	Litter Zone										
	Piringen	167.0	36.9	16:33	16:22	16:12					
Borgloon											
	Haren	169.1	34.8	16:36	16:25	16:14					
	Bommershoven	170.0	33.9								



THE
NEW

iX1



 GEEF VOORRANG AAN VEILIGHEID.

Milieu-informatie (KB 19/03/04): bmw.be

16,8-19,0 KWH/100KM • 0 G/KM CO₂ (WLTP)

#LIMBURG2024

In 2024 Limburg is welcoming
the European Championships



© Tormanti

When? 11 - 15 September 2024

Host cities? Hasselt and Heusden-Zolder

Number of races? 13



With the family, on an e-bike or a racing bike, Best of Limburg is an opportunity for everyone to enjoy themselves

Want to explore the beautiful region south of Hasselt from the saddle? You can do so on Sunday 28 May, because the Proximus Cycling Challenge is heading to the Limburg capital of Hasselt for Best of Limburg, a newcomer of stature under the canopy. The cyclo is not just aimed at the trained cyclist. Families with children and e-bikers can also set off from Kolonel Dusartplein for a ride designed just for them.

Proximus Family Rides

It does not always have to be about the racing bike. As part of the Proximus Family Rides, Best of Limburg provides an adapted offer for families with children. The youngest among us can have fun on the animated 13-kilometre ride. The route takes you past the Kapermolen Park, the Japanese Garden and the Demer towards the turning point in Diepenbeek. At the start and finish location, the children can test their cycling skills, under supervision, on an agility course. The 25-kilometre ride is suitable for slightly older children and lets you discover the Nietelbroeken nature reserve.



E-bikes and regional products

Those who prefer to get around on an e-bike can enjoy the 48-kilometre ride. Along the way you will not only discover the nicest spots south of Hasselt, you will also cycle past the beautiful Castle of Mombeek. Besides a little bit of effort, this ride also provides room for relaxation. At the stopover in Café Coureur, we fortify the inner person with some delicious local products. Is the battery of your bike almost empty? There are charging points at the provisioning location, so no fears about not getting back to Hasselt.

Exploring the Ronde van Limburg

Trained cyclists will also get their money's worth during Best of Limburg. If you want to explore the roads of the Ronde van Limburg the day before the professional race, you have a choice between rides of 77, 110 and 150 kilometres. Those taking on the 77-kilometre ride travel via Diepenbeek and Hoeselt towards the Land Commandery Alden-Biesen. Just past the beautiful castle grounds, the cobblestones of the Maastrichterallee await. The return to Hasselt is via Borgloon and Kortesseem.

The 110-kilometre ride also dishes up a number of vicious climbs. Just after the Maastrichterallee, get ready to climb the Keiberg. On the way to Borgloon, you also come across the cobblestones of Op de Kriezel and the Kolmontberg. The longest ride of 150 kilometres takes another loop towards the Dutch border before passing the wine castle of Genoels-Elderen. The ride challenges you with just over 1,000 vertical metres.



Bike market

After your efforts, you can wander around a convivial bike market at the start and finish site. Everything to do with cycling can be found there. You can meet local bicycle dealers, have your bike engraved or test what it feels like to cycle on rollers.

Fancy joining us for a bike ride on Sunday 28 May? Take a quick look at www.bestoflimburgcyclo.be for all the practical information and sign up! Late deciders can still sign up on-site on the day of the event.

smaak
spraak

maker
maker

Hasselt

Limburg
begint hier.



HASSELT
HEEFT
HET.

Wie Hasselt hoort, denkt aan het bruisende stadsleven, de vele gezellige pleintjes en terrassen en smaakmakende restaurants. Dat maakt van Hasselt de ideale uitvalsbasis om ook de rest van Limburg te ontdekken. Zijn we weg?

visithasselt.be

FLANDERS GRAVEL

⚡ LIMBURG ⚡

05 / 08 / 2023

GRAVEL PARADISE
INCLUDING TIMED SECTIONS



INCLUDED

COFFEE AT THE START
SIGNPOSTED ROUTES
FEED ZONES ALONG THE COURSE
MECHANICAL ASSISTANCE
PASTA POST-RIDE
MUSIC, CAMPFIRE & GRAVELVIBES!

LOCATION
BILZEN

DISTANCE
**65, 110 AND
140 KM**

ENJOY THE
DISCOUNT RATE NOW
REGISTER BEFORE 13/07

TICKET
& INFO
HERE

Kom toeren in
de eerste stad

Tongeren



Scan de QR-code en ontdek
onze **toeristische gids 2021!**





Follow the race here

Along the course or from your living room? You experience the race the way you want to! Via the Ronde van Limburg channels, we will keep you informed of the latest race developments. Follow live on TV.

Don't miss any of the action!

As a true cycling fan, you won't want to miss a single second of the action. Make sure our channels are among your favourites and find out on which channels you can follow the finale.

DO YOU ALREADY FOLLOW ALL THE RONDE VAN LIMBURG CHANNELS?

-  [RondeLimburg](#)
-  [derondevanlimburg](#)
-  [Ronde van Limburg](#)

We will bring you great photos from the races, reels, live race reports on Twitter and we are sending out a social media reporter. Do you have any questions for us or do you want to share your experiences? Tag our channels and show us how you are experiencing this Limburg classic!

#RVL23

FOLLOW LIVE

Do you prefer to follow the race from the comfort of your own armchair so that you don't have to miss a second of the race? We have listed all the channels on which you can watch a live broadcast in our list of broadcasters below. The first live images will be appearing as from **15:00**. Enjoy the race!

SOMETHING FOR THE TOURIST

Want to know more about the Limburg castles and monuments that the director puts on the screen? Click below to go to the tourist guide in which we have gathered together for you all the beautiful sights along the course.

Lente in Bilzen

Zó blijf je weer te zien!

Ontdek het verrassend aanbod
op www.visitbilzen.be

bilzen
biesonder boeiend

Limburg switches up a gear in functional cycling

Cycling in Limburg means enjoying the beautiful blossoms and fruit crops, the beautiful panoramas and the historical towns. You can experience nature to the full by literally cycling through the water, the heathland and the trees. Cycling tourism is strong here, but the province is also switching up a gear when it comes to functional cycling. Good, efficient and safe mobility has become essential for the vulnerable road user on two wheels and that is why Limburg is happy to put extra effort into this.



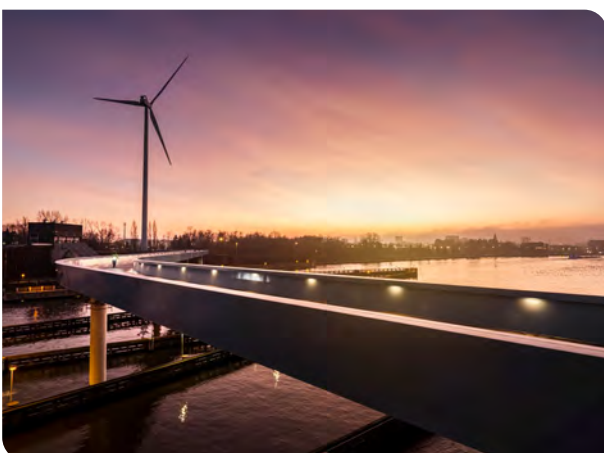
Cycling highway F70

The cycling highway F70, for example, takes you through the green Demer valley and that is why it is also called the Demer route. This cycling highway, which largely runs parallel to the railway line, connects Hasselt and Diepenbeek by means of a comfortable and safe cycle path. For students in Hasselt or Diepenbeek, it is the most ideal and fastest connection between the two campuses. The F70 is currently being expanded so that the cycling highway runs to Bilzen. But also many other cycling highways wind their way through this beautiful province, just like the Ronde van Limburg does, to bring cyclists quickly and safely to their destination.



Cycling bridge Kuringen

In April 2021, an old railway bridge was taken in hand and transformed into a new bridge for cyclists. This cycling bridge, located in Kuringen, is also part of the Limburg cycling highway network and thus also a link in the north-south axis of the cycling highways. The bridge connects to the cycling highway along the Albert Canal that connects Antwerp to Hasselt.



Cycling bridge De Langeman

The De Langeman cycling bridge is an important part of the cycling connection between the centre of Hasselt and the employment poles of the Albert Canal and the Corda Campus. It is also a direct bicycle connection from Hasselt to the north of Limburg and an east-west connection along the Albert Canal. The festive opening of the cycling bridge took place on 27 December 2021 at the lock in Godsheide (Hasselt) and it provides a unique view of the lock's hydroelectric power station.



Cycling tunnels

Three new cycling tunnels have been constructed under the busy crossing on the Grote Ring with the Universiteitslaan and the Boudewijnlaan in Hasselt. The tunnels, which have been open since 2021, ensure that cyclists can now safely move around the crossing in all directions. The new tunnels are spacious and offer plenty of light.



Cycling through the water, the trees and the Heathland

Cycling in Limburg is anything but boring and this is proven by three fantastic cycling experiences. Ever wanted to cycle through water? You can in Bokrijk! You can cycle right through the ponds of the Wijers at cycling node 91. The water comes up to eye level so that you can experience nature to the full.

Cycling through the trees is possible in Hechtel-Eksel, at the Pijnven in Bosland, near node 272 of the cycling network. You become, as it were, one with the forest thanks to a path that gradually rises to a height of 10 metres. The construction blends in nicely with the surroundings thanks to the poles that symbolise the straight trunks of the pine trees.



In Maasmechelen, you can cycle along a four-kilometre route right through the Hoge Kempen National Park with 'Cycle through the Heathland'. To connect this beautiful cycling route at node 551 safely to the existing cycling node network, a sustainable 300 metre long wooden panorama bridge was built, which offers a view over a 700-hectare heathland plain.



Cycling nodes

In addition to the functional cycle paths, there are of course also many nodes on the cycling network in Limburg. In this popular way, you can discover many beautiful cycling routes in Limburg. So too node 550 in Maasmechelen. This cycling node was the most popular one in Flanders in 2021. You do not have to think hard to discover the reason for this, because you can cycle via node 550 to node 551, where you can 'Cycle through the Heathland'.



Cycling barometer

At the end of 2020, Limburg also launched the Cycling Barometer, which the province aims to use to gain insight into the quality of the functional cycling route network. It helps municipal authorities to adjust their cycling policies so that Limburg citizens can cycle more safely and better. For instance, there are bike counters along the road and a measuring bike from the Fietsersbond provides an objective view of the characteristics and quality of the existing cycling infrastructure.



BORGLOON
parel met pit



Ronde van Limburg

Honorary list

Year	1st		2nd		3d	
1919	Henri Moerenhout	BE	Louis Budts	BE	Edmond Van Heynighem	BE
1920	Victor Lenaers	BE	Casterman	BE	Jef Mosselmans	BE
1929	Evrard Bourguignon	BE	Lode Mertens	BE	Gysenberghs	BE
1930	Louis Hardiquet	BE	Jozef Horemans	BE	Eugene Gijbels	BE
1931	Edward Huyghens	BE	Eugene Gijbels	BE	Grosemans	BE
1933	Frans Bonduel	BE	Alfons Deloor	BE	Maurice Croon	BE
1934	Louis Roels	BE	Odile Van Eenoghe	BE	Gustaaf Van Slembroeck	BE
1935	Frans Van Hasselt	BE	Joseph Huts	BE	August Van Tricht	BE
1936	Michel D'Hooghe	BE	Marcel Van Schil	BE	Ernest Planckaert	BE
1937	Alfons Schepers	BE	Joseph Huts	BE	Mathieu Cardeynaels	BE
1938	Joseph Huts	BE	Ward Vissers	BE	Frans Gahy	BE
1939	Frans Spiessens	BE	Albert 'T Jolyn	BE	Georges Claes	BE
1941	Albert Dubuisson	BE	Achiel Buysse	BE	Georges Claes	BE
1942	Gustaaf Van Overloop	BE	Achiel Buysse	BE	Eugene Jacobs	BE
1943	Marcel Kint	BE	Achiel Buysse	BE	Andre Declerck	BE
1944	Ernest Sterckx	BE	Sylvain Grysolle	BE	Edward Van Dijck	BE
1945	Eloi Meulenberg	BE	Leopold Verschueren	BE	Edward Van Dijck	BE
1946	Edward Van Dijck	BE	Roger Cnockaert	BE	Edward Peeters	BE
1947	Georges Claes	BE	Maurice Mollin	BE	Emile Goutier	BE
1948	Karel Leysen	BE	Constant Verschueren	BE	Leopold Verschueren	BE
1949	Rik Van Steenberghe	BE	Gerard Buyl	BE	Frans Leenen	BE
1950	Jean Bogaerts	BE	Edward Peeters	BE	Jacques Dupont	FR
1951	Henri Serin	BE	Lode Anthonis	BE	Joseph Verhaert	BE
1952	Roger De Corte	BE	Karel Debaere	BE	Ernest Sterckx	BE
1953	Gaston De Wachter	BE	Frans Loyaerts	BE	Jozef De Feyter	BE
1954	Edward Peeters	BE	Ludo Vander Elst	BE	Jan Storms	BE
1955	Ernest Sterckx	BE	Karel Van Dormael	BE	Desire Keteleer	BE
1956	Frans Schoubben	BE	Karel Van Dormael	BE	Jan Van Gompel	BE
1957	Willy Vannitsen	BE	Emiel Severeys	BE	Jan Huyskens	BE
1958	Roger Baens	BE	Jean Vermaelen	BE	Willem Hendriks	BE
1959	Valere Paulissen	BE	Gerard Vergoossen	NL	Piet van den Brekel	NL
1960	Willy Vannitsen	BE	Frans Aerenhouts	BE	Georges Mortiers	BE
1961	Martin Van Geneugden	BE	Willy Schroeders	BE	Raymond Impanis	BE
1962	Peter Post	NL	Jos Wouters	BE	Jos Verachttert	BE
1963	Jos Wouters	BE	Jo De Haan	NL	Ludo Janssens	BE
1964	Jos Dewit	BE	Jos Verachttert	BE	Lode Troonbeeckx	BE
1965	Georges Vanconingsloo	BE	Reindert De Jong	NL	Roger De Coninck	BE
1966	Fernand Deferm	BE	Georges Vanconingsloo	BE	Jean-Baptise Claes	BE
1967	Ward Sels	BE	Theo Mertens	BE	Fernand Deferm	BE

Ronde van Limburg

Honorary list

Year	1st		2nd		3d	
1968	Leo Duyndam	NL	Patrick Sercu	BE	Fons De Bal	BE
1969	Willy Vekemans	BE	Jos van der Vleuten	NL	Valere Vansweevelt	BE
1970	Jan van Katwijk	NL	Georges Vanconingsloo	BE	Raf Hooyberghs	BE
1972	Jos Abelshausen	BE	Frans Verbeeck	BE	Raf Hooyberghs	BE
1973	Jos Abelshausen	BE	Frans Verhaegen	BE	Jean-Pierre Berckmans	BE
1974	Frans Verbeeck	BE	Roger De Vlaeminck	BE	Bernard Bourguignon	BE
1975	Guido Van Sweevelt	BE	Cees Priem	NL	Walter Godefroot	BE
1976	Frans Van Looy	BE	Benny Schepman	BE	Willem Peeters	BE
1977	Marcel Laurens	BE	Rik Van Linden	BE	Benny Schepmans	BE
1978	Willem Peeters	BE	Miel Gijsemans	BE	Rudy Pevenage	BE
1979	Guido Van Sweevelt	BE	Gerrie Kneteman	NL	Dirk Heirweg	BE
1980	Daniel Willems	BE	Paul Wellens	BE	Jos Jacobs	BE
1981	Ludwig Wijnants	BE	Heddie Nieuwdorp	NL	Leo van Vliet	NL
1982	Werner Devos	BE	Jan Bogaert	BE	Fons Dewolf	BE
1983	Rudy Matthijs	BE	Henk Lubberding	NL	William Tackaert	BE
1984	Noël Dejonckheere	BE	Leo van Vliet	NL	Benny Van Brabant	BE
1985	Eric Vanderaerden	BE	Ron Snijders	NL	Jan Bogaert	BE
1986	Ad Wijnands	NL	Peter Hoondert	NL	Frank Van De Vijver	BE
1987	Wim Arras	BE	Jean-Paul van Poppel	NL	Willi Engelbrecht	ZA
1988	Eric Vanderaerden	BE	Peter Pieters	NL	Wim Van Eynde	BE
1989	Jerry Cooman	BE	John Vos	NL	Eric Vanderaerden	BE
1990	Eddy Planckaert	BE	Benny Van Brabant	BE	Uwe Raab	DE
1992	Jans Koerts	NL	Jo Planckaert	BE	Benny Van Brabant	BE
1993	Patrick Van Roosbroeck	BE	Hendrik Redant	BE	Danny Nelissen	NL
1994	Marc Wauters	BE	Stephane Hennebert	BE	Frank Corvers	BE
2012	Kevin Claeys	BE	Rick Zabel	DE	Klaas Vantornout	BE
2013	Olivier Chevalier	BE	Kevin Claeys	BE	Huub Duyn	NL
2014	Mathieu van der Poel	NL	Paul Martens	DE	Greg Henderson	NZ
2015	Bjorn Leukemans	BE	Dimitri Claeys	BE	Wouter Mol	NL
2016	Kenny Dehaes	BE	Tom Boonen	BE	Timothy Dupont	BE
2017	Wout van Aert	BE	Dorian Godon	FRA	Gianni Vermeersch	BE
2018	Mathieu van der Poel	NL	Nacer Bouhanni	FRA	Tim Merlier	BE
2019	Eduard-Michael Grosu	RO	Simone Consonni	IT	Lasse Norman Hansen	DK
2021	Tim Merlier	BE	Daniel McLay	GB	John Degenkolb	DE
2022	Arnaud De Lie	BE	Simone Consonni	IT	Danny van Poppel	NL

SPORT.

Je bent erbij
vanop de eerste rij.

Al het sportnieuws uit eerste hand

In onze  app volg je al het sportnieuws op de voet met onze **gratis liveblog**. Zo ben jij erbij, vanop de eerste rij.



Onze app nog niet gedownload?
Scan de **QR-code** of surf naar www.hbvl.be/app

 **LIVE**



Partners

MAIN PARTNERS



INSTITUTIONAL PARTNERS



OFFICIAL PARTNER



MEDIA PARTNER



FEDERATIONS



SERVICE PARTNERS

